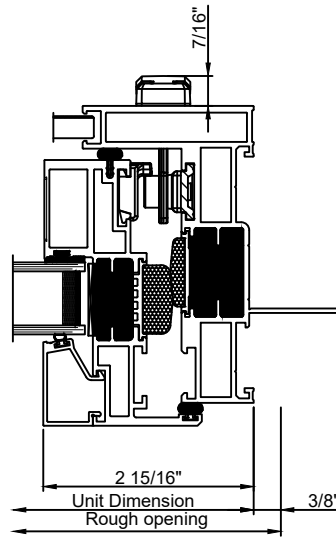
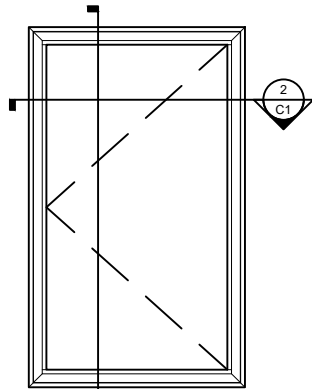


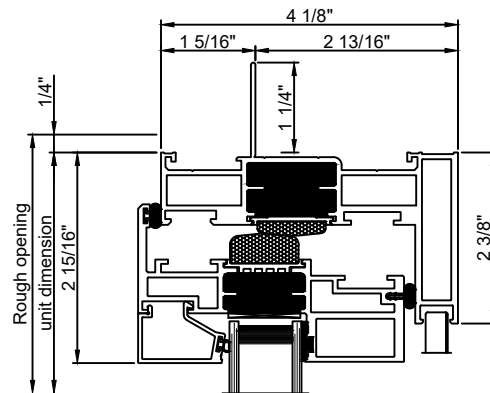
Exterior



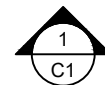
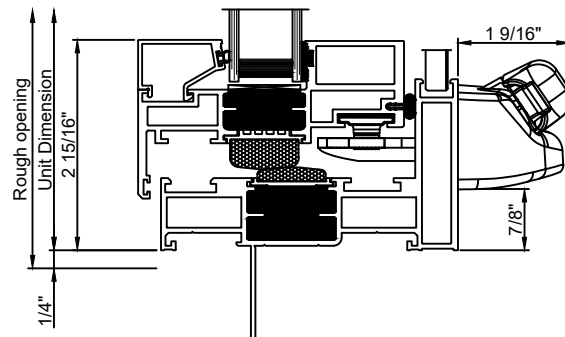
Window cut sections 3/8" = 0' 1"



Window Elevation 3/8" = 1' 0"

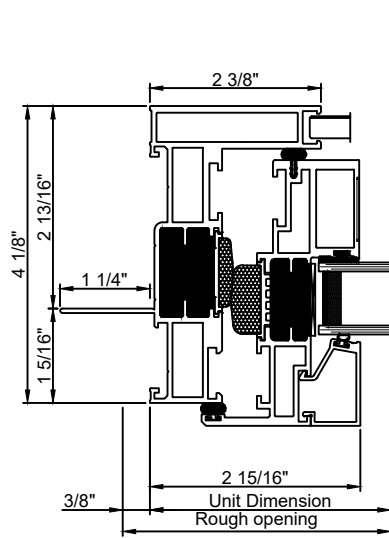


Exterior

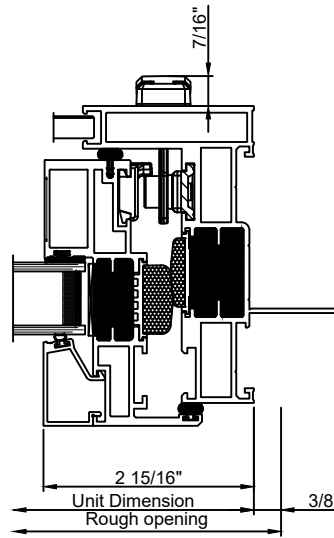


Window cut sections 3/8" = 0' 1"

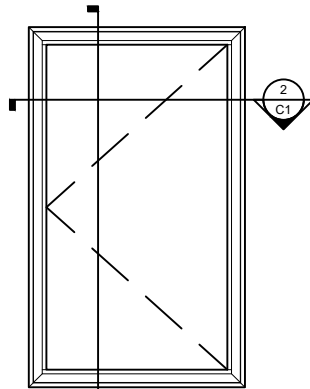
Note: All dimensions are approximate. Quaker reserves the right to change specifications without notice.



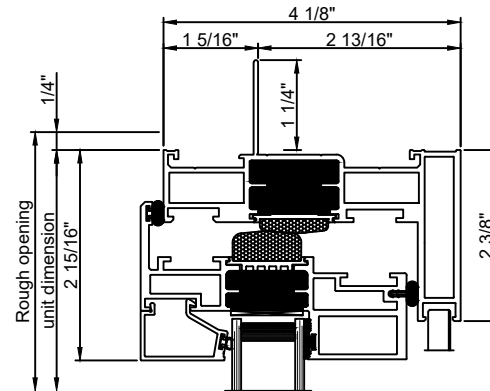
Exterior



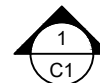
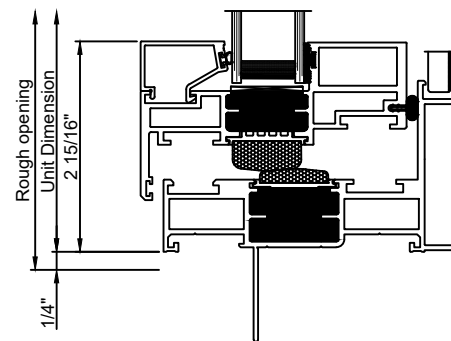
Window cut sections 3/8" = 0' 1"



Window Elevation 3/8" = 1' 0"

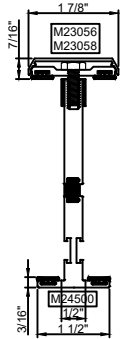


Exterior



Window cut sections 3/8" = 0' 1"

Note: All dimensions are approximate. Quaker reserves the right to change specifications without notice.

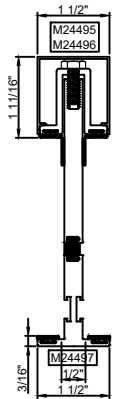


**T-MULL**

M24500 - T-MULL  
M23056 - BASE  
M23058 - CAP

BPN-9159 - W.S. (QTY. 4)  
MH1/4 20X3/4 - BOLTS (18" APPROX. O.C.)  
5229-PC - ANCHOR (QTY. 2)  
MPS-8X1 1/2 - FASTENERS (QTY. 2)

**CAN ONLY BE USED WITH C600**

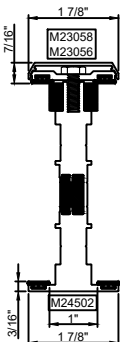


**T-MULL**

M24497 - T-MULL  
M24495 - BASE  
M24496 - CAP

BPN-9159 - W.S. (QTY. 4)  
MH1/4 20X3/4 - BOLTS (18" APPROX. O.C.)  
ANCHOR (QTY. 2)  
MPS-8X1 1/2 - FASTENERS (QTY. 2)

**CAN ONLY BE USED WITH C600**

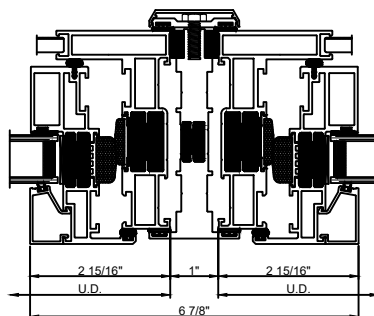
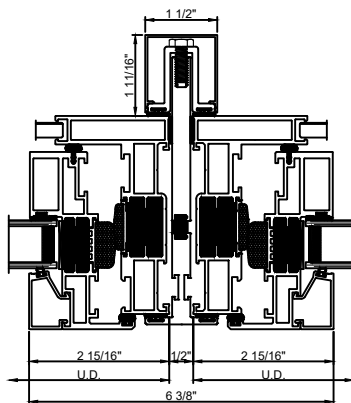
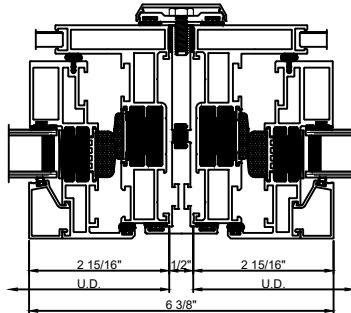


**T-MULL**

M24502 - T-MULL  
M23056 - BASE  
M23058 - CAP

BPN-9159 - W.S. (QTY. 4)  
MH1/4 20X3/4 - BOLTS (18" APPROX. O.C.)  
5228 - ANCHOR (QTY. 2)  
MPS-8X1 1/2 - FASTENERS (QTY. 2)

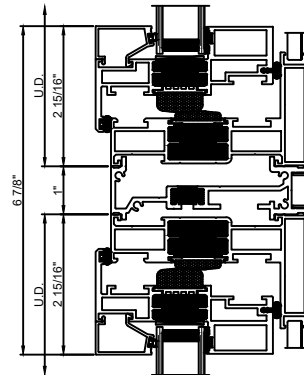
**CAN ONLY BE USED WITH C600**



Exterior

Window cut sections 1:4

Exterior



**1" STACK MULL**

M23841 - STACK MULL  
M23842 - INTERIOR COVER  
970-300 - WEEP COVER  
QWP-M23844 - END DAM (QTY. 2)  
BRBT46 - POP RIVET (QTY. 8)

**C600 Install ONLY**

Window cut sections 1:4

Note: All dimensions are approximate. Quaker reserves the right to change specifications without notice.